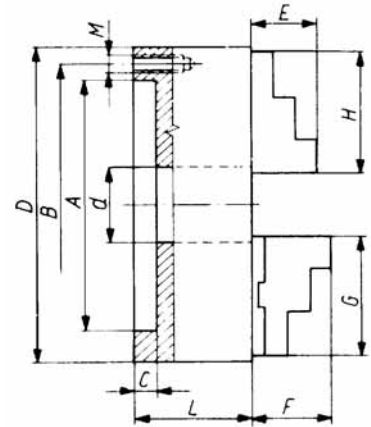


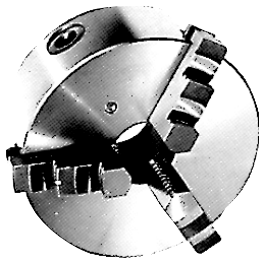
## Manual Chucks

### 3 Jaw Self-Centering Steel Body Chucks

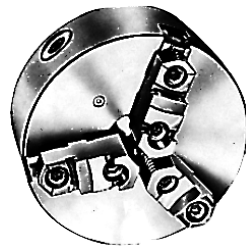
All base jaws, scroll and pinions made of fine alloy steel and hardened. The scroll is balanced and the teeth and jaws ground on both sides. All bearing surfaces are hardened and precision ground. Low profile body and supplied with grease nipple. Mounting dimensions according to DIN 6350. Precision within DIN 6386.



Type 8353



Type 8363

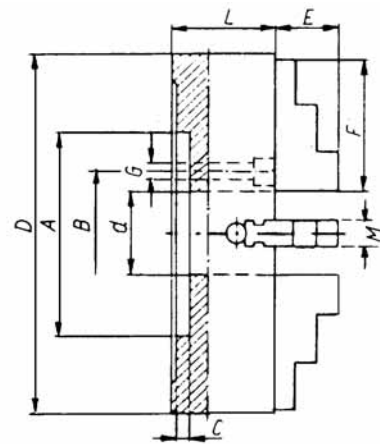


DIMENSIONS (mm)

PART NO.	8353-080	8353-100	8353-125 8363-125	8353-160 8363-160	8353-200 8363-200	8353-250 8363-250	8353-315 8363-315	8353-400 8363-400
D	80	100	125	160	200	250	315	400
MAX RPM	6000	5200	4800	4500	4000	3500	2800	2000
A	56	70	95	125	160	200	260	330
B	67	83	108	140	176	224	286	362
C	3	3	4	4	4	5	5	5
d	16	20	32	42	55	76	103	136
E	13	17	20	32	29	34	43	55
F	-	-	40	43	45	53	57	67
M	M6	M8	M8	M10	M10	M12	M16	M16
H	32	42	51	70	85	105	125	145
G	-	56	67	85	105	125	145	
L	44	50	62	70	80	90	100	110
kg	1.5	2.7	4.7	9.3	16.4	34.0	66.0	90.0
SOFT JAW PART NO.			-	8347	8041	8045	8063	8527

Type: 8353 – with 2 sets of solid jaws.

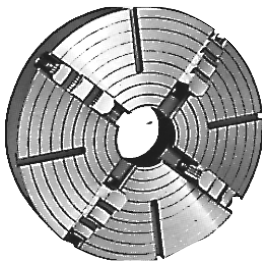
Type: 8363 – with reversible hard jaws.



### 4 Jaw Independent Chucks, Cast Iron Body

With solid reversible jaws. Jaws, spindles and bolts are made from high quality steel. These parts are hardened and ground. Adaptor plate mounting or direct mounting according to DIN or CAMLOCK.

Type 4100



DIMENSIONS (mm)

PART NO.	4100-250	4100-315	4100-400	4100-500	4100-630	4100-800
D	250	315	400	500	630	800
MAX SPEED RPM	1500	1200	800	500	400	300
A(H7)	150	175	200	270	270	380
d	65	80	100	125	160	200
C	7	7	10	12	12	12
G	14	17,5	17,5	21	21	25
E	40,3	49,8	49,8	59,8	59,8	70,8
F	96,5	111	129	152,5	177	202
B	104,8	133,4	171,4	235	235	330,2
L	85	95	105	120	140	160
M	32	40	40	52	52	70
NO. OF HOLES	4	4	4	4	4	4
THREAD	M12	M16	M16	M20	M20	M24
kg	25	40	63	105	165	315

Also available with an integral 'A' Series or 'D' Series mounting.

